

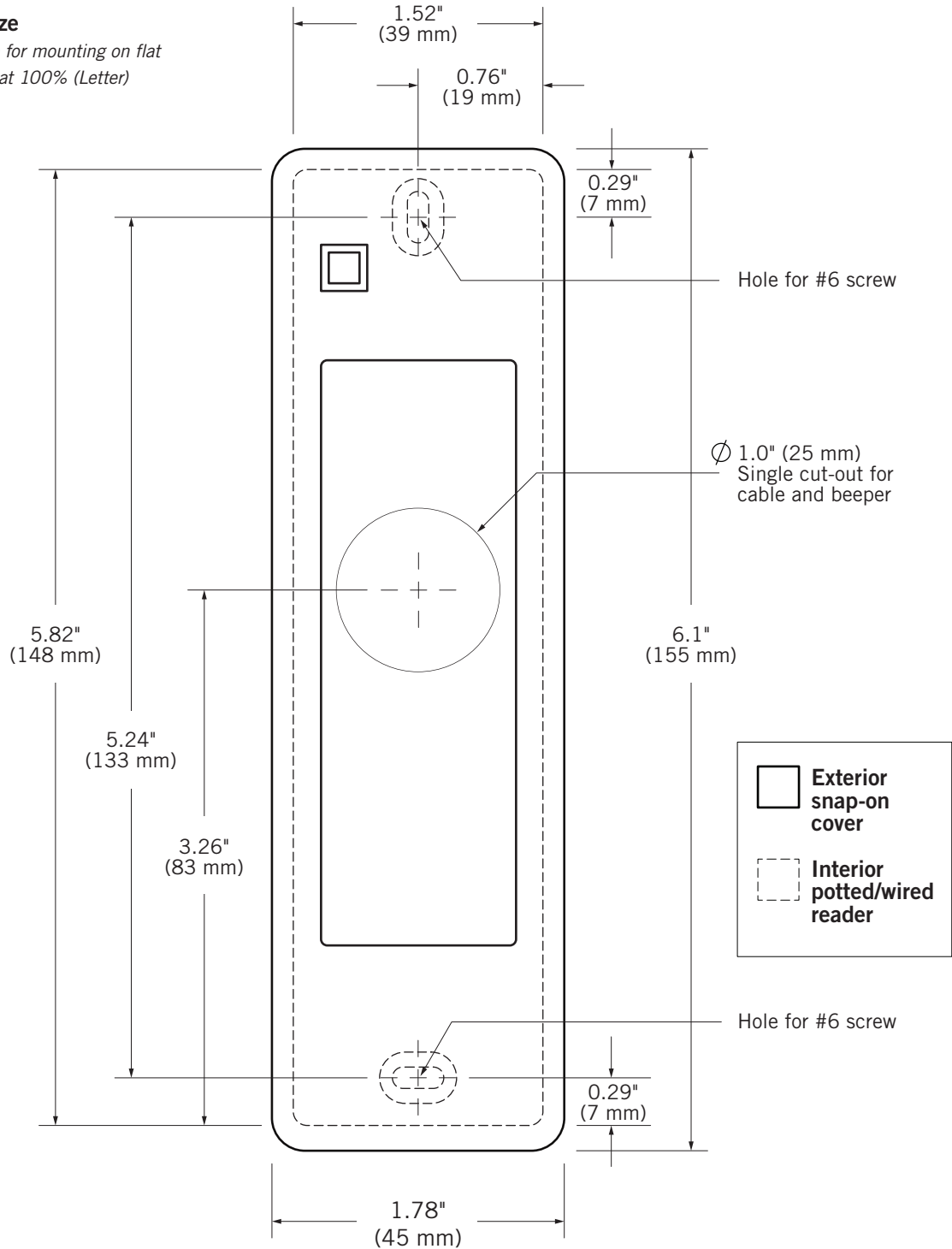


MOUNTING GUIDE

CSR-6.2L MOBILE-READY CONTACTLESS SMARTCARD READER

Shown Actual Size

To use as a template for mounting on flat surfaces, print page at 100% (Letter)



FRONT VIEW

Be sure to use appropriate tools and proper safety equipment during installation.
Farpointe Data reserves the right to change specifications without notice.
© 2020 Farpointe Data, Inc. All rights reserved.

Farpointe Data, Inc.
2195 Zanker Road
San Jose, CA 95131 USA
Office: +1-408-731-8700
Fax: +1-408-731-8705
support@farpointedata.com